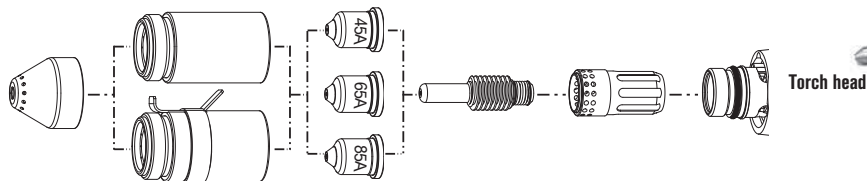


# Hypertherm® powermax 105

## Duramax machine torch consumables

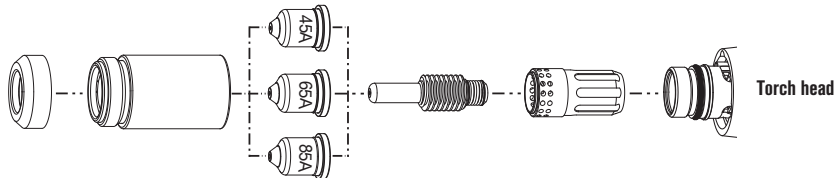


### Mechanized consumables



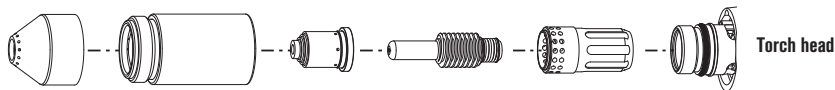
	Shield	Retaining cap	Nozzle	Electrode	Swirl ring
45 A	220817*	220854	220941*	220842*	220994
65 A	220817*	220854	220819*	220842*	220994
85 A	220817*	220854	220816*	220842*	220994
105 A	220993*	220854	220990*	220842*	220994
Ohmic		220953			

### Unshielded consumables



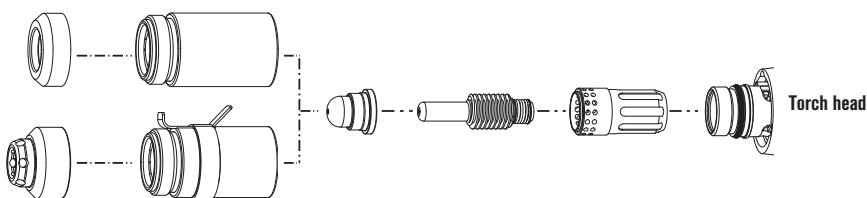
	Shield/Deflector	Retaining cap	Nozzle	Electrode	Swirl ring
45 A	220955	220854	220941*	220842*	220994
65 A	220955	220854	220819*	220842*	220994
85 A	220955	220854	220816*	220842*	220994
105 A	220955	220854	220990*	220842*	220994

### Gouging consumables



	Shield	Retaining cap	Nozzle	Electrode	Swirl ring
65 A/85 A	220798	220854	220797*	220842*	220994
105 A	220798	220854	220991*	220842*	220994

### FineCut consumables



	Shield/Deflector	Retaining cap	Nozzle	Electrode	Swirl ring
45 A	220955	220854	220930*	220842*	220994
Ohmic	220948	220953			



**Duramax series**



**Duramax robotic series**

All-in-one and FineCut kits are available, see pages 25 – 26 or visit: [www.hypertherm.com/consumablekits](http://www.hypertherm.com/consumablekits).

\*Consumables available in a bulk package option, see page 27 for bulk package information.

New CopperPlus longer life electrode available for Duramax torches. Please refer to the back cover of the catalog for additional information. CopperPlus part number 220777.